

GENERAL FEATURES

- 999 Mobile ID Capacity
- FleetSync® or NEXEDGE® Messaging & AVL
- Analog Conventional & LTR® Operation
- NEXEDGE® Conventional & Trunked (Single / Multi-Site) Operation
- Imported JPEG, BMP, GIF, EMF or WMF Image Maps
- Google Earth™ Maps (KML Output)

GENERAL DISPATCH FEATURES

- Stun / Remote Kill / Emergency / Man-Down
- Text Messages
- 20 Pre-defined Text Message List
- Status Message Request
- Horn Alert
- Lone Worker (FleetSync® & NEXEDGE®)

ANALOG DISPATCH MESSAGING

- Voice Call (FleetSync®): Individual, Fleet, Group, Broadcast, Supervisor
- 70 (FleetSync®) Custom Status Messages

NEXEDGE® DIGITAL MESSAGING

- Voice Call (NXDN®): Individual, Group, Broadcast
- 207 Custom Status Messages
- Remote Monitor & Remote Re-Grouping

NEXEDGE® IP NETWORK OPERATION

- AVL & Dispatch Operation Over IP
- Trunked IP Operation¹
- Conventional IP Operation²
- Digital Voice Systems, Inc. USB-3000™ AMBE+2™ (Required)
- 100 Group Scan with 4 Priority Monitor ID's
- NXDN® Voice Scrambling

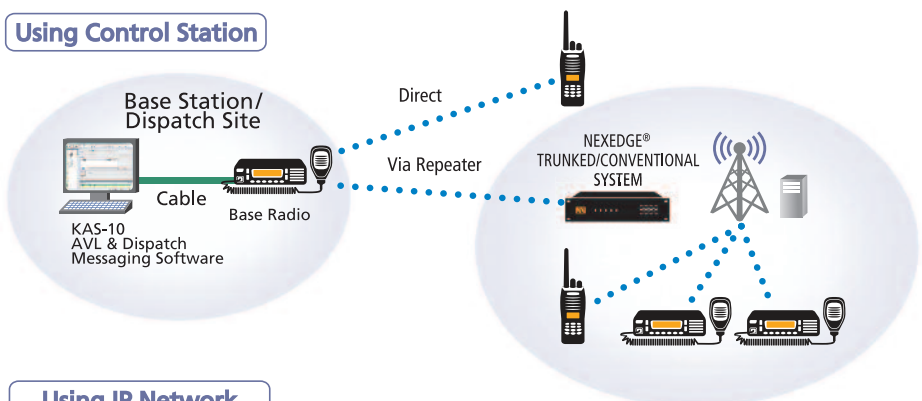
OPERATORS GRAPHICAL INTERFACE

- Independent Dispatch & AVL Screens
- Integrated Call Operation Windows
- 20 Vehicle, 30 Status & Emergency Icons
- Mobile Icon Tags (name, unit, status message, time, speed, GPS status)
- Emergency Panel Alerts
- View & Track Selected or All Vehicles
- Alphanumeric Text Message Send/Receive Display
- Send Voice Call
- PTT Momentary / Lock Control
- Send Position Request
- Find Location Feature (address, place/data, LAT & LONG)

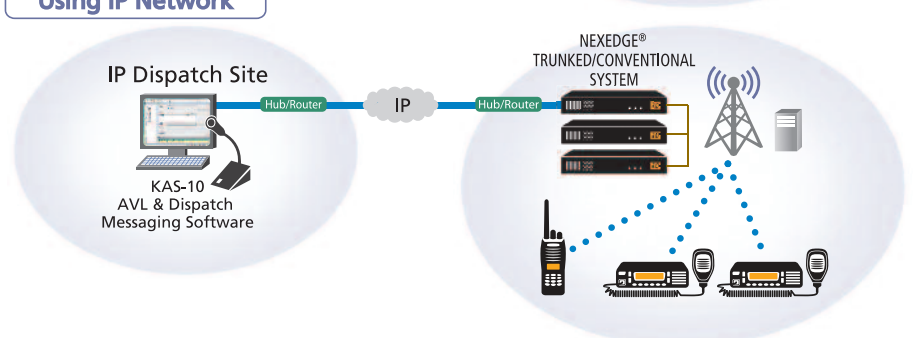
ADMINISTRATIVE ASSISTANT

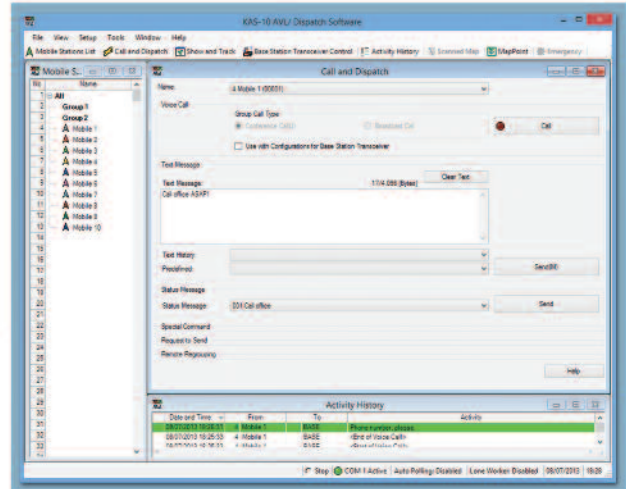
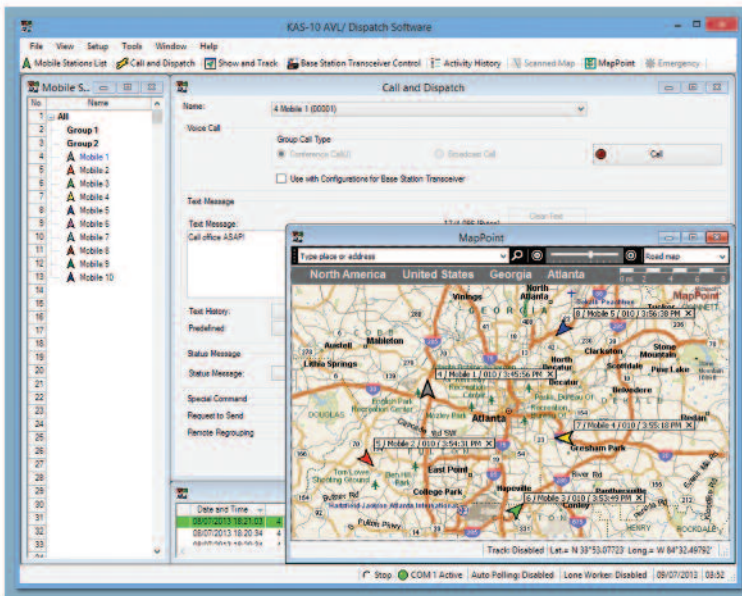
- Administrator Password Protection Setup
- Auto Polling / Auto Reporting
- Speed Restrictions Warning
- Geofence – Alert System for Area Management
- Historical Logging & File Playback
- Emergency & Man-Down Log File Review
- WAV File Import for Warning and New Messages
- In Coming / Out Going Voice Record & Play
- Sent Message Queue

Using Control Station



Using IP Network





BASE/CONTROL STATION REQUIREMENTS

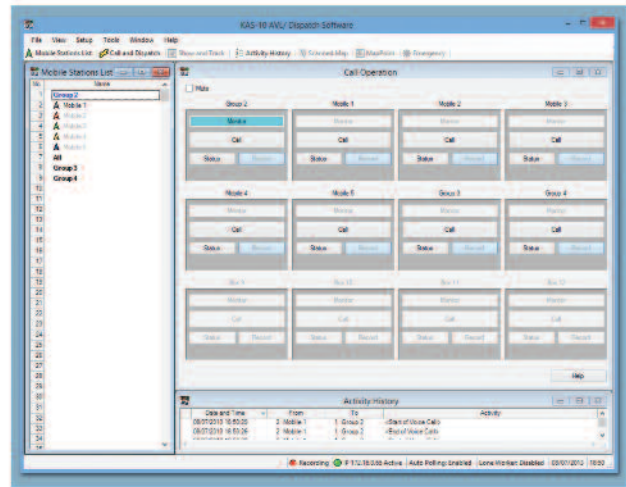
- Compatible Kenwood radio with FleetSync® or NEXEDGE® Signalling & Messaging
- PC Serial Interface Cable*
- Optional KMC-9B/9C Desktop Base Microphone for mobile radio

FLEET RADIO REQUIREMENTS

- Compatible Kenwood mobile or portable radios
- Internal or external GPS with Antenna* (Mobile)
- GPS Speaker Microphone* (Portable)

PC SOFTWARE/HARDWARE REQUIREMENTS

- Microsoft® Windows® XP / Windows Vista® / Windows® 7 (32/64 bit) Windows® 8 (32/64 bit) Operating System
- Intel® Pentium® III 1GHz (minimum) / Intel® Pentium® 4 2GHz or higher (recommended), Intel® Pentium® 4 3GHz or higher (required for IP Network Operation)
- 256MB (minimum) or 512MB and more (recommended) memory, 100MB HDD free space, CD-ROM, DVD-ROM, Serial Port, XGA (1024 x 768)
- Digital Voice Systems, Inc USB-3000™ AMBE+2™ Vocoder* for IP Network Operation
- External PC Microphone* and Speaker* required for IP Network Operation



Specifications are subject to change without notice, due to advancements in technology

footnotes from Front:
¹ Trunked IP Operation:
 Up to 10 KAS-10 per Trunked Site
 Up to 100 KAS-10 per Trunked Network.
² Conventional IP Operation:
 Up to 10 KAS-10 per NXR-700/800/900/901 repeaters (required firmware Ver.4.0 or later)
 Up to 2 KAS-10 per NXR-710/810 (with KTI-3) repeaters (required firmware Ver.2.0 or later)

FleetSync® is a registered trademark of JVCKENWOOD Corporation.
 NEXEDGE® is a registered trademark of JVCKENWOOD Corporation.
 NXDN® is a registered trademark of JVCKENWOOD Corporation and Icom Inc.
 LTR® is a registered trademark of Transcrypt International.
 Microsoft®, Windows®, Windows Vista® are trademarks of Microsoft Corporation in the U.S. and other countries.
 Intel® and Pentium® are trademarks of Intel Corporation in the U.S. and other countries.
 USB-3000™ and AMBE+2™ are trademarks of Digital Voice Systems, Inc.
 Google Earth™ is a trademark of Google Inc.
 Note: Downloading, installation or using Google Earth software or using service is subject to Google Inc. Terms of Service, Legal Notices and Additional Terms.



JVCKENWOOD USA Corporation
 Communications Sector Headquarters
 3970 Johns Creek Court, Suite 100, Suwanee, GA 30024-1265
 Order Administration/Distribution
 P.O. BOX 22745, 2201 East Dominguez St., Long Beach, CA 90801-5745
www.kenwood.com/usa

JVCKENWOOD Canada Inc.
 Canadian Headquarters and Distribution
 6070 Kestrel Road, Mississauga, Ontario, Canada L5T 1S8
www.kenwood.ca



ISO9001 Registered
 JVCKENWOOD Corporation